

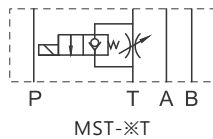
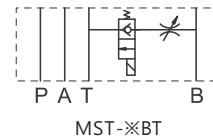
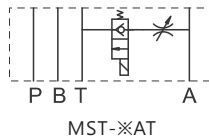
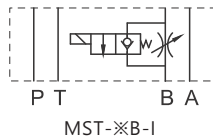
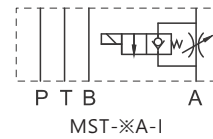
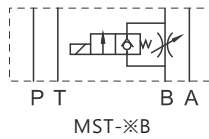
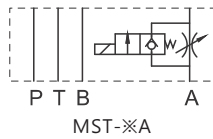
## MST疊加式電磁節流閥



### ◆ 型號說明

| MST      | -02                | A            | -I                 | -A240  | -20  |
|----------|--------------------|--------------|--------------------|--|------|
| 閥代號      | 公稱通徑               | 控制油路         | 控制型式               | 線圈電壓   | 設計編號 |
| 疊加式電磁節流閥 | 02:1/4"<br>03:3/8" | A:A孔<br>B:B孔 | 無標記:出口節流<br>I:進口節流 | D12:DC12V<br>D24:DC24V<br>A110:AC110V<br>A240:AC220V | 20   |

### ◆ 液壓符號



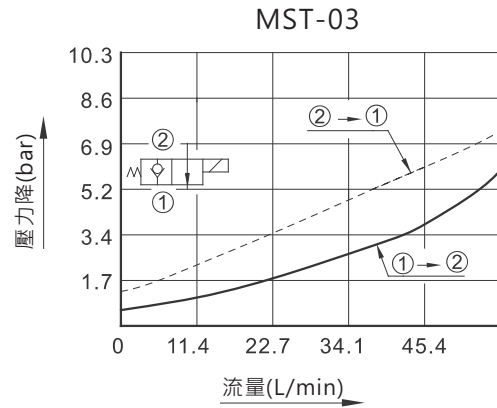
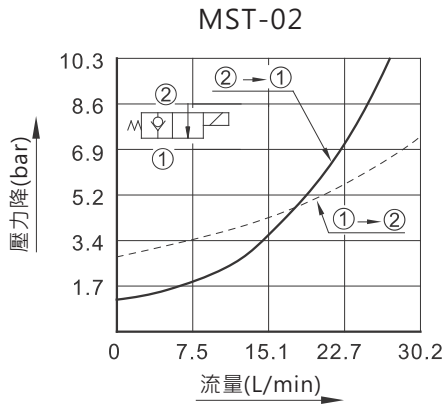
### ◆ 性能規格

| 公稱通徑 | 最高工作壓力(bar) | 額定使用壓力(bar) | 額定流量(L/min) |
|------|-------------|-------------|-------------|
| 02   | 315         | 250         | 20          |
| 03   |             |             | 45          |

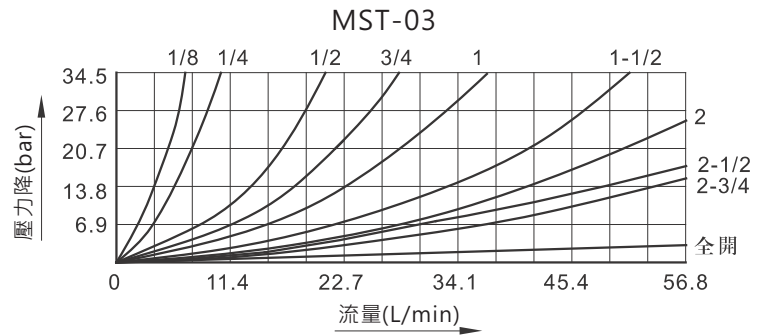
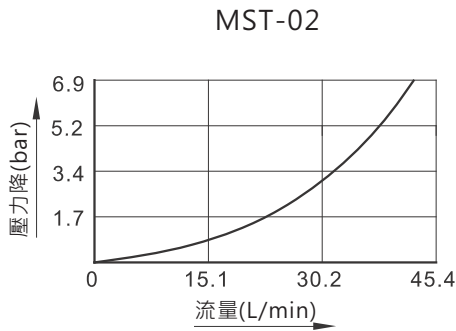
## ◆ 特性曲線

測試條件：粘度32mm<sup>2</sup>/s 溫度：40°C

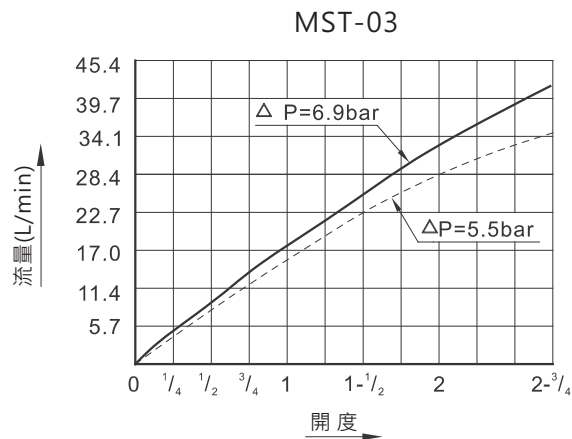
### ● 電磁換向閥通電時自由流流量—壓力降特性曲線



### ● 流量—壓力降特性曲線

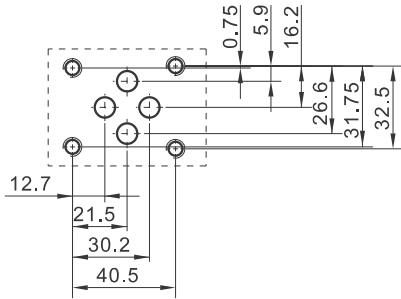


### ● 流理—開度

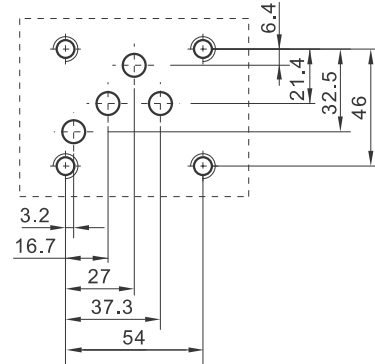


## ◆ 外形安裝尺寸

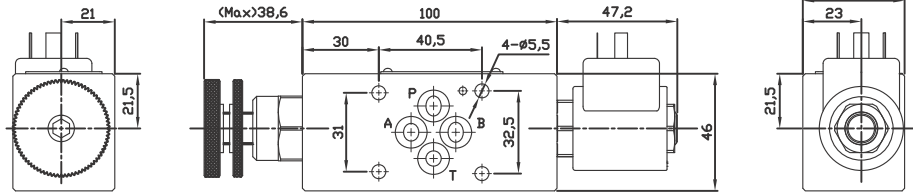
● 02 系列安裝面：  
ISO4401-AB-03-4-A



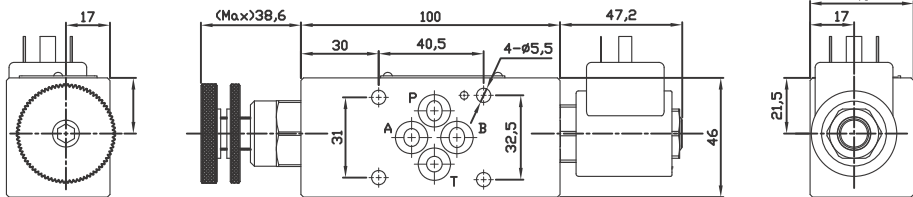
● 03 系列安裝面：  
ISO4401-AC-05-4-A



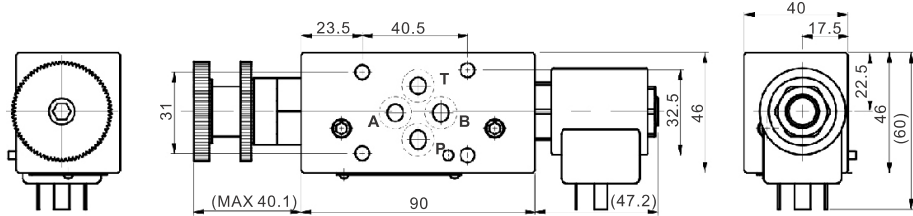
● MST-02A



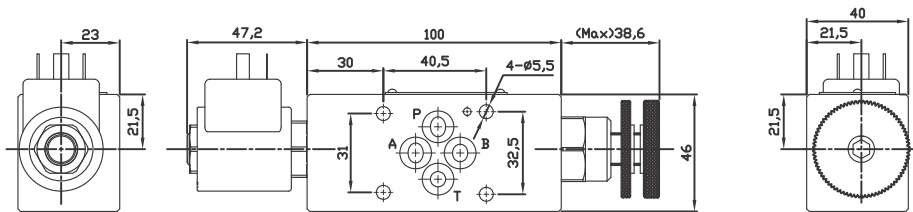
● MST-02A-I



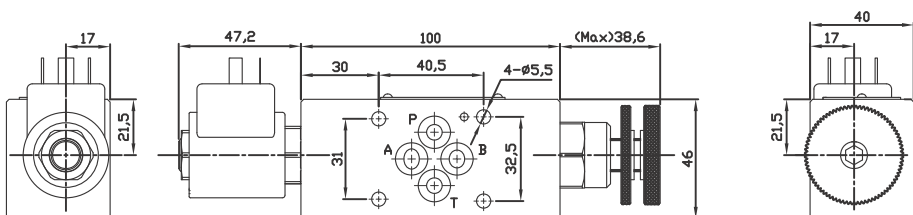
● MST-02AT



● MST-02B



● MST-02B-I

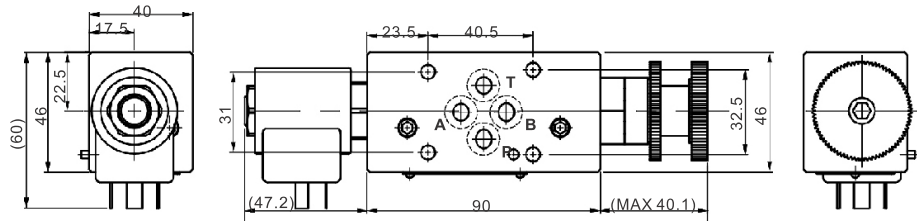


D

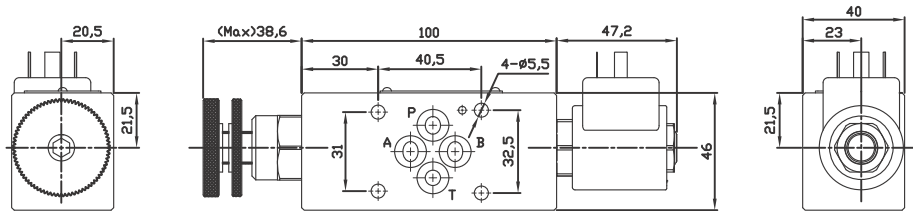
疊加閥

MST疊加式電磁節流閥

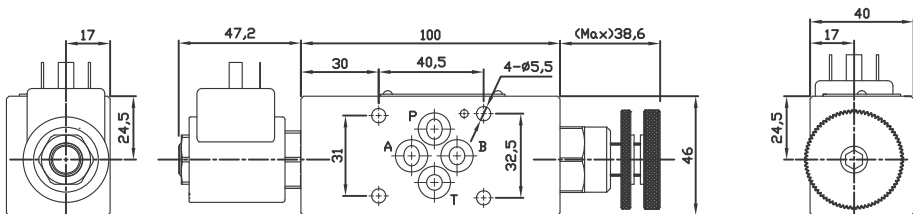
● MST-02BT



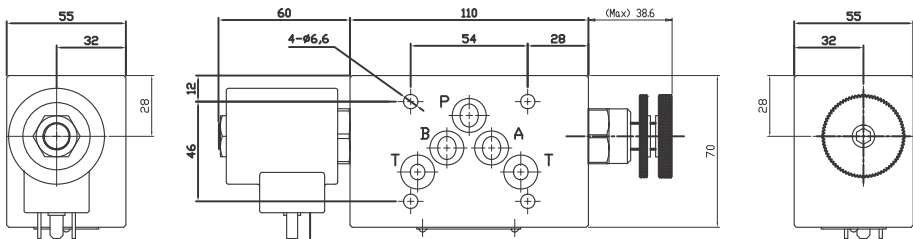
● MST-02P



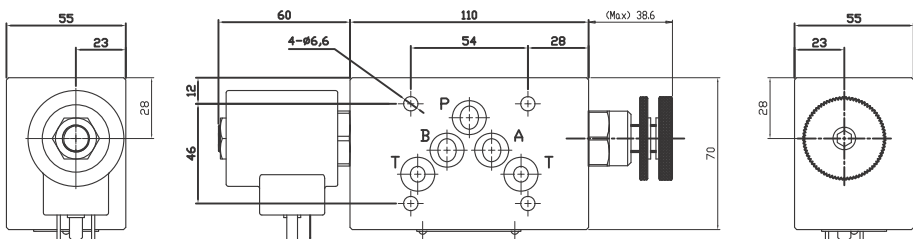
● MST-02T



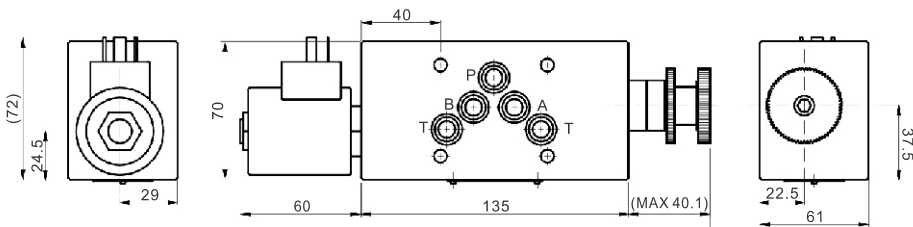
● MST-03A



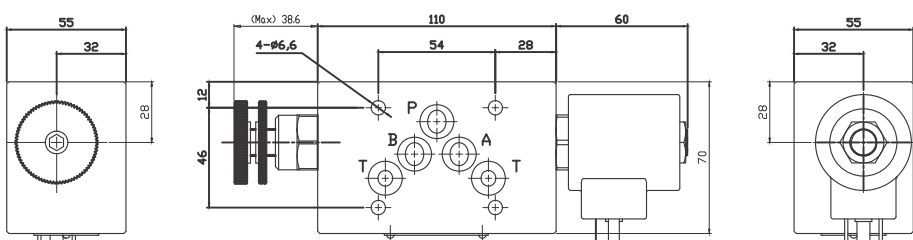
● MST-03A-I



● MST-03AT



● MST-03B

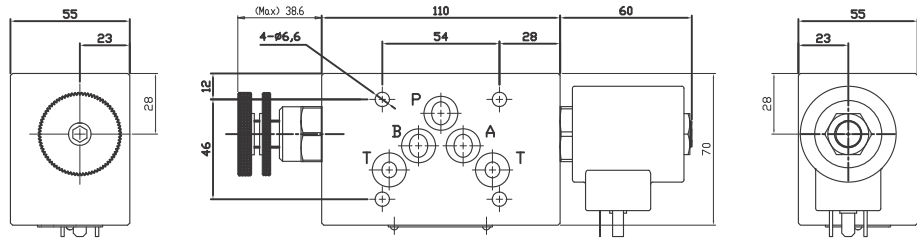


D

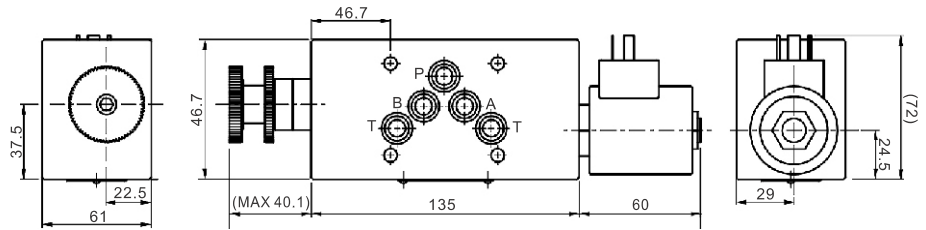
疊加閥

MST疊加式電磁節流閥

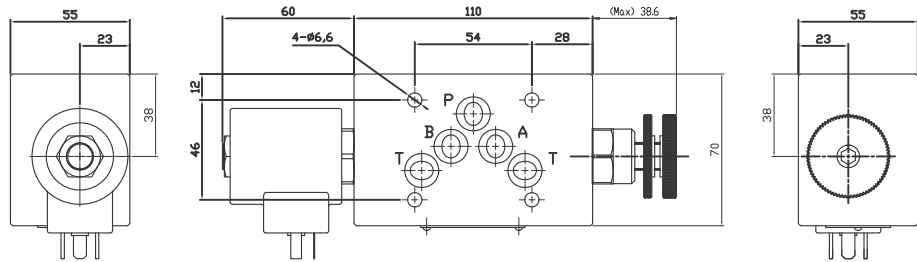
● MST-03B-I



● MST-03BT



● MST-03T



疊加閥

MST疊加式電磁節流閥